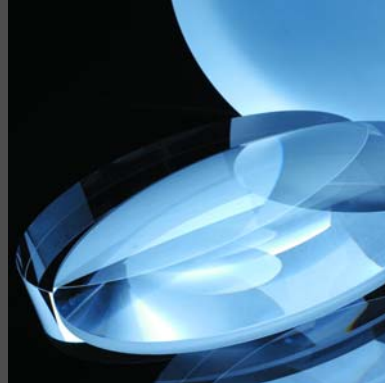


HPFS® Fused Silica Standard Grade



CORNING
Discovering Beyond Imagination



Semiconductor
Optics

HPFS® Standard Grade, Corning code 7980, is a high purity synthetic amorphous silicon dioxide manufactured by flame hydrolysis. The noncrystalline, colorless, silica glass combines a very low thermal expansion coefficient with excellent optical qualities and exceptional transmittance in the ultraviolet. It is available in a number of grades for different applications.

In order to satisfy the challenging quality requirements of our customers in leading edge applications such as microlithography, Corning is dedicated to continuous improvement. Our investments in research and development, combined with Corning's quality systems, support our technology leadership position and ensure that we meet our customer's requirements on time, every time.

Quality Grade Selection Chart — HPFS® Standard Grade

Corning defines and certifies the quality of HPFS® glass using two criteria: inclusions and homogeneity grade.

Inclusion Class			Homogeneity ^{3,4} ppm							
			Grade							
Class	Total Inclusion ¹ Cross Section [mm ²]	Maximum ² Size [mm]	AA ≤ 0.5	A ≤ 1	B ≤ 1.5	C ≤ 2	D ≤ 3	E ≤ 4	F ≤ 5	G ⁵ NS
0	≤ 0.03	0.10	■	■	■	■	■	■	■	■
1	≤ 0.10	0.28		■	■	■	■	■	■	■
2	≤ 0.25	0.50			■	■	■	■	■	■
3	≤ 0.50	0.76				■	■	■	■	■
4	≤ 1.00	1.00					■	■	■	■
5	≤ 2.00	1.27					■	■	■	■

NOTES:

1. Defines the sum of the cross section in mm² of inclusions per 100 cm³ of glass. Inclusions with a diameter ≤ 0.10 mm are disregarded.
2. Refers to the diameter of the largest single inclusion.
3. Index homogeneity: the maximum index variation (relative), measured over the clear aperture of the blank.
4. Index homogeneity is certified using an interferometer at 632.8 nm. The numerical homogeneity is reported as the average through the piece thickness. Blanks with a diameter up to 450 mm can be analyzed over the full aperture. Larger parts can be analyzed using multiple overlapping apertures. The minimum thickness for index homogeneity verification is 20 mm. For thinner parts, the parent piece is certified.
5. NS (not specified)

Mechanical and Thermal Properties:

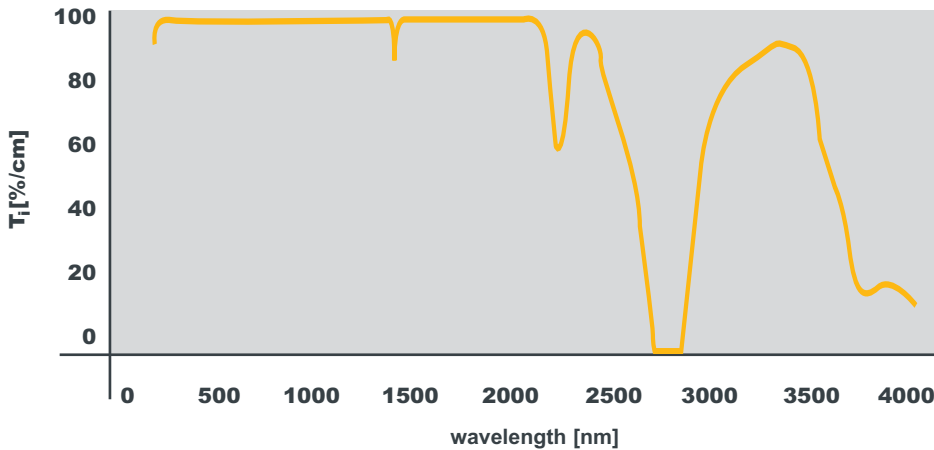
Unless otherwise stated, all values @ 25°C

Elastic (Young's) Modulus	72.7 GPa	Softening Point	1585 °C (10 ^{7.6} poises)
Shear Modulus	31.4 GPa	Annealing Point	1042 °C (10 ¹³ poises)
Modulus of Rupture, abraded	52.4 MPa	Strain Point	893 °C (10 ^{14.5} poises)
Bulk Modulus	35.4 GPa	Thermal Conductivity	1.30 W/m K
Poisson's Ratio	0.16	Thermal Diffusivity	0.0075 cm ² /s
Density	2.201 g/cm ³	Average C.T.E.	0.52 ppm/K 5 °C-35 °C
Knoop Hardness (100 g load)	522 kg/mm ²		0.57 ppm/K 0 °C-200 °C
			0.48 ppm/K -100 °C-200 °C

Chemical Durability and Impurities

Solution		Time	Weight Loss [mg/cm ²]	Impurities
5% HCL by weight	@95 °C	24 h	<0.010	OH content (by weight): 800-1000 ppm Impurities other than OH: ≤ 1000 ppb
5% NaOH	@95 °C	6 h	0.453	
0.02N NA ₂ CO ₃	@95 °C	6 h	0.065	
0.02N H ₂ SO ₄	@95 °C	24 h	<0.010	
Deionized H ₂ O	@95 °C	24 h	0.015	
10% HF by weight	@25 °C	20 m	0.230	
10% NH ₄ F*HF by weight	@25 °C	20 m	0.220	

Internal Transmittance



HPFS® Standard Grade is certified to meet T external ≥ 80%/cm@185nm (T internal ≥ 88%/cm@185nm), when measured through a polished, uncoated sample. A typical internal transmittance curve for HPFS® Standard Grade fused silica is shown here.

Refractive Index and Dispersion

Data in 22°C in 760mm Hg dry nitrogen gas

Wavelength [air] λ [nm]	Refractive Index ^{*2} n	Thermal Coefficient $\Delta n/\Delta T$ ^{*3} (ppm/K)	Polynomial Dispersion Equation Constants ^{*1}	
			A ₀	A ₁
1128.64	1.448870	9.6	2.104025406	
1064.00	1.449633	9.6	-1.456000330 x 10 ⁻⁴	
1060.00	1.449681	9.6	-9.049135390 x 10 ⁻³	
1013.98 n _t	1.450245	9.6	8.801830992 x 10 ⁻³	
852.11 n _s	1.452469	9.7	8.435237228 x 10 ⁻⁵	
706.52 n _r	1.455149	9.9	1.681656789 x 10 ⁻⁶	
656.27 n _c	1.456370	9.9	A ₆ -1.675425449 x 10 ⁻⁸	
643.85 n _{c'}	1.456707	10.0	A ₇ 8.326602461 x 10 ⁻¹⁰	
632.80 n _{He-Ne}	1.457021	10.0	Sellmeier Dispersion Equation Constants ^{*2}	
589.29 n _D	1.458406	10.1	B ₁	0.68374049400
587.56 n _d	1.458467	10.1	B ₂	0.42032361300
546.07 n _e	1.460082	10.2	B ₃	0.58502748000
486.13 n _F	1.463132	10.4	C ₁	0.00460352869
479.99 n _{F'}	1.463509	10.4	C ₂	0.01339688560
435.83 n _g	1.466701	10.6	C ₃	64.49327320000
404.66 n _h	1.469628	10.8	Δn/ΔT Dispersion Equation Constants ^{*3}	
365.01 n _i	1.474555	11.2	C ₀	9.390590
334.15	1.479785	11.6	C ₁	0.235290
312.57	1.484514	12.0	C ₂	-1.318560 x 10 ⁻³
308.00	1.485663	12.1	C ₃	3.028870 x 10 ⁻⁴
248.30	1.508433	14.2	Other Optical Properties	
248.00	1.508601	14.2	v _d 67.79	
214.44	1.533789	17.0	v _e 67.64	
206.20	1.542741	18.1	n _F -n _C 0.006763	
194.17	1.559012	20.4	n _{F'} -n _{C'} 0.006802	
193.40	1.560208	20.5	Stress Coefficient 35.0 nm/cm MPa	
193.00	1.560841	20.6	Striae ISO 10110-4 Class 5/Thickness Direction	
184.89	1.575131	22.7	Birefringence ≤ 1nm/cm, lower specifications available	

*1 Polynomial Equation: $n^2 = A_0 + A_1 \lambda^4 + A_2 \lambda^2 + A_3 \lambda^{-2} + A_4 \lambda^{-4} + A_5 \lambda^{-6} + A_6 \lambda^{-8} + A_7 \lambda^{-10}$ with λ in μm

*2 Sellmeier Equation: $n^2 - 1 = B_1 \lambda^2/(\lambda^2 - C_1) + B_2 \lambda^2/(\lambda^2 - C_2) + B_3 \lambda^2/(\lambda^2 - C_3)$ with λ in μm

*3 $\Delta n/\Delta T$ Equation (20–25°C) = $C_0 + C_1 \lambda^2 + C_2 \lambda^4 + C_3 \lambda^6$ with λ in μm

We are here to help you specify the best product for your application. For further information, please contact:

Worldwide Accessibility

United States/Canada Sales Office

Corning Incorporated
Semiconductor Optics Business
334 County Route 16
Canton, NY 13617

t: 315.379.3600
f: 315.379.3317
e-mail: hpfs@corning.com

European Sales Office

Corning GmbH
Corning International
Abraham-Lincoln-Strasse 30
D-65189 Wiesbaden, Germany

t: 49.611.7366.100
f: 49.611.7366.143
e-mail: CIgermany@corning.com

Asia Sales Offices

Corning International K.K.
No. 35 Kowa Building, 3F
14-14, Akasaka 1-chome
Minato-Ku, Tokyo 107-0052
Japan

t: 81.3.3586.1052
f: 81.3.3587.0906

Corning International
1 Kim Seng Promenade
#12-12
GreatWorld City
West Tower
Singapore 237994
Republic of Singapore

t: 65.733.6511
f: 65.861.7310

Corning Korea Company Ltd.
10th Floor, Kukje Center Bldg.
191, Hangangro 2-Ka
Yongsan-Ku
Seoul, Korea 140-702

t: 82.2.796.9500
f: 82.2.796.9300

Corning Glass Taiwan Co. Ltd.
Room # 1023, 12F
No. 205
Tun Hua North Road
Taipei, Taiwan

t: 886.2.2716.0338
f: 886.2.2716.0339

Australia Sales Office

Corning International Australia
Suite 18
12, Tryon Road
Lindfield, NSW 2070
Australia

t: 61.2.9416.0492
f: 61.2.9416.0493

World Headquarters

Corning Incorporated
One Riverfront Plaza
Corning, New York 14831-0001
t: 607-974-9000

The information contained herein is based upon data considered to be accurate. However, no warranty is expressed or implied regarding the performance of this product. The only applicable warranties are those that are set out in a contract or purchase.

Corning Incorporated

One Riverfront Plaza
Corning, NY 14831
607 974 9000

© Corning Incorporated 2003

HPFS® is a registered trademark of Corning Incorporated.

www.corning.com

September 30, 2003